

Revel Breezer Rebirth*

Quick start guide

DRAFT

Author: Umberto Giacobbi

Document created: 2021.07.17

Revisions

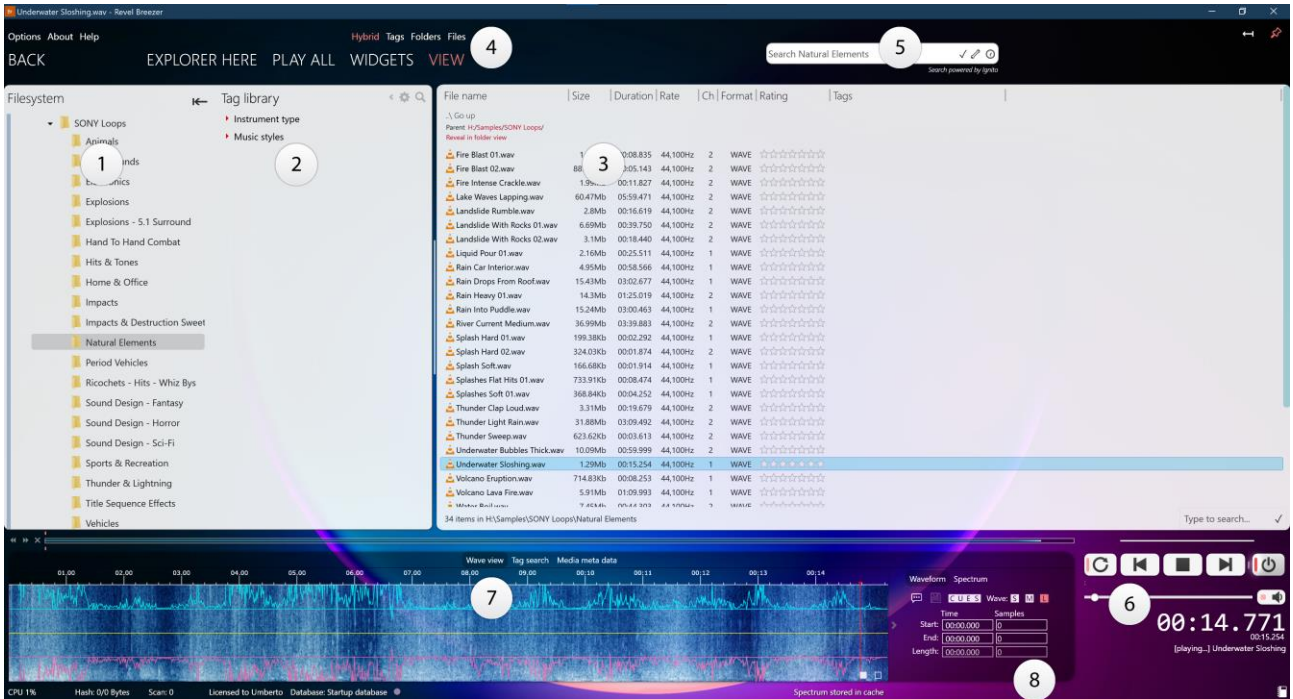
2021.07.17 First draft

2021.08.26 Added workspace screenshots

DRAFT

Summary

- Revisions 2
- Introduction 5
- Workspace overview 6



- 1 – Folder view 6
- 2 – Tag library 6
- 3 – File view 6
- 4 – Main menu 6
- 5 – Search box 6
- 6 – Playback controls 6
- 7 – Waveform, tags and metadata view 6
- 8 – Status bar 7
- Tooltips are your best friend! 8
- Shared context menu item 8
- Playback and preview 8
- Preview on file selection 8
- Single-click replay 8
- Play from the middle 8
- Stop on windows deactivation 8
- Toggle looping 8
- Unload media 8
- Open mixer 8

View	8
Tap pad	9
Toggle workspace controller's visibility.....	9
Debug window.....	9
Docking	9
Tools	9
Folders panel context menu	10
Pin folder to favourites.....	10
Pin network folder or drive	10
Open file explorer here	10
Ban path (make invisible)	10
Explorer context menu	10
Copy.....	10
Copy path.....	10
Paste	10
Rename.....	10
File view and search results context menu	11
Refresh view	11
Remove all tags.....	11
Remove tag from selection.....	11
Rating.....	11
Advanced	11
Tag library context menu.....	12
New.....	12
Tag selection wit 'X'	12
Tag view with 'X'	12
Filter.....	12
Delete 'X'.....	12
Delete (including child tags)	13
Move tag up by one level	13
Refresh.....	13
Copy tagged files to folder.....	13
Move tagged files to folder	13
Edit 'X' properties	13

Introduction

This is a short guide that will help you in the discovery phase of Breezer, at first, in fact, you will find many commands and could be difficult to understand each command. Here we will first focus on the different context menu, because a lot of command are available here, straight away.

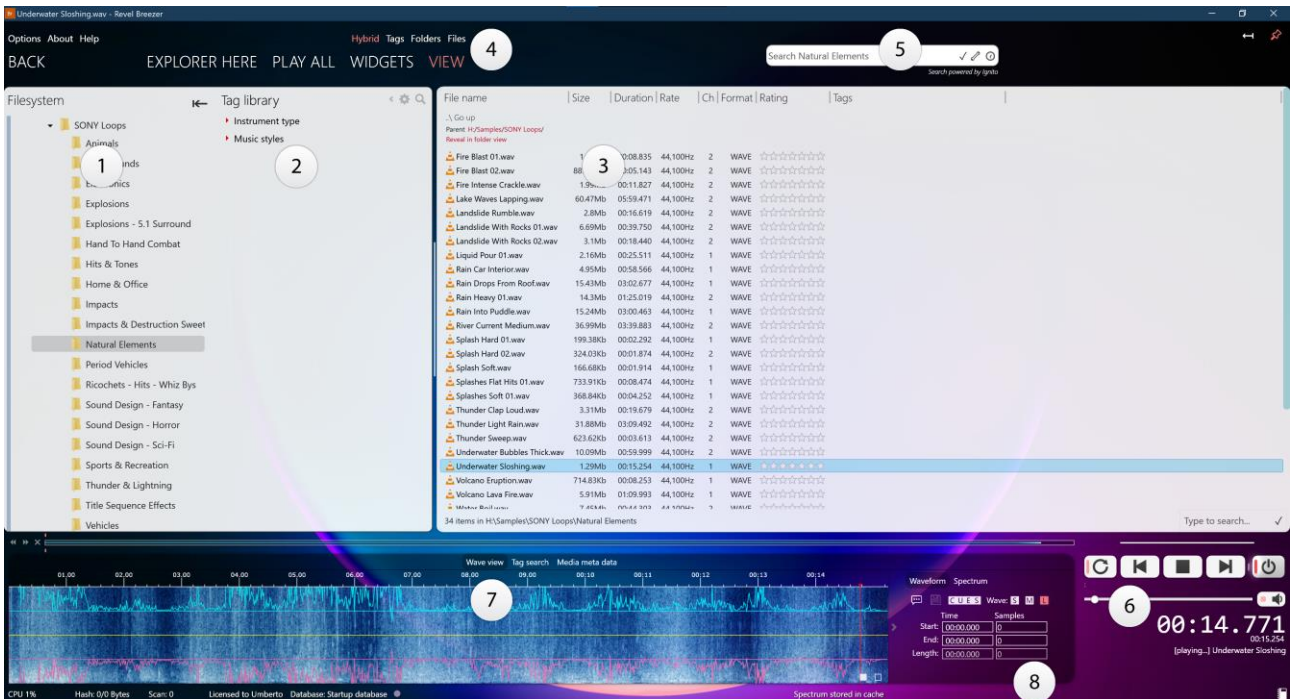
Please note that most of the commands interact with the actual application state (e.g., do you have a folder or media file selected?) and they disable or enable themselves based on the context.

Remember that you can always ask for support, or suggest a feature thru our forum, available at:

<https://umbertogiacobbi.biz>

DRAFT

Workspace overview



1 – Folder view

Here you can browse your system for samples, as well as copy/paste/drag'n'drop folders between windows and Breezer.

2 – Tag library

Breezer supports browsing library by tags, when you apply to a folder of files a tag then you can browse your library via file system, and then by tags when you're in a folder and you want to refine the search.

Note: if you open the tag library options (the gear icon in the upper left corner) you can choose to search only by tag, no matter where the original file is in your filesystem.

3 – File view

Here any search result, or simply your media are shown during navigation/search.

4 – Main menu

Widgets, opens different tools (database switcher, BPM calculation and more), the view menu allows you to cycle thru different view, file system only, tag only, hybrid and files only.

5 – Search box

Type here any text to search and (by default) Breezer will search the current folder as well as child folders. Please note that the text search can work together with the tag search. For options check the icons in the textbox to access, options, history and clear the search.

6 – Playback controls

Here you can control the playback state and volume.

7 – Waveform, tags and metadata view

Here you can find the waveform view (with spectrum view), if the file is cued here you will see each cue overlaid on the waveform (including any annotation). In tag view you have full access to the current tag filter and different commands to manage/edit your tag library.

The file metadata panel will display any bpm information, metadata as well as file information about the currently selected media.

8 – Status bar

Here Breezer will tell you important information about what he is doing and sometimes he will tell you which kind of operation you are performing. As an example, if you drag'n'drop a tag over a folder the default behaviour is to add the tag to folder, but if you press the control key the chosen tag will be removed from the media files contained in the folder.

DRAFT

Tooltips are your best friend!

We put a lot of effort to make sure that each button, label, command has a proper tooltip that can help you to better understand what an UI element does. So, in the begging we suggest you spend few minutes to explore the user interface and check out the various commands available.

Also, we the software has a built-in notification system, as an example if you do not do a database backup, Breezer will remember you to do so periodically, at the same time when working, as an example, with the tag library we try to show different tips that can help you to understand the tag library inner workings and possibilities.

Shared context menu item

Breezer has a set of standard commands that you can find in any context menu. Below you will find a description of each command.

Playback and preview

This menu give you access to different customizations of the built-in player. Remember that those settings are stored in your preferences so at each access you will find the same configuration as you left.

Preview on file selection

If checked the playback starts immediately as soon as you select a media file.

Single-click replay

When enabled, this option instructs Breezer to restart the playback each time you click on the media file, without waiting the endo of file. Particularly useful, as an example, when you deal with short samples like single-shot percussions or SFx.

Play from the middle

As the command description says, when checked, Breezer will start the playback from the middle of the file. A real use case scenario if when you deal with long samples with long intros that mostly of the time are exceptionally low volume or packed with silence in the beginning. With this option enabled, the playback will start right in the middle of the media, saving you few clicks.

Stop on windows deactivation

When you start a drag'n'drop operation, or you switch to your DAW (as an example) Breezer will stop the playback automatically.

Toggle looping

Enable or disable the playback in loop (or not). Remember that this option will impact also custom loop regions, not only the playback of an entire media.

Unload media

Unloads from memory the current media.

Open mixer

This command will open the standard Windows mixer, where you can control each app volume.

View

Under this menu you can find, for your convenience, a copy of the view commands presents in the tool bar (under the widgets item).

Tap pad

Breezer supports natively cue points, which are then stored inside the database, the tap pad can be used during playback to mark (via space bar) a cue point during the playback.

Note: Breezer can read cue point from files that supports that (some wave files, and near every rex file support that feature) but Breezer will NEVER alter your media files, in any way.

Note: You can always move a cue point with your mouse or set his position down to the sample level.

Toggle workspace controller's visibility

Make visible or invisible the playback controls and the waveform view, this to give you the maximum real estate for the file/folder view.

Debug window

Show a very technical window used for diagnostic purposes only.

Docking

Breezer can be used as a sidebar, in that mode the desktop windows are arranged accordingly. you can choose where to dock it and if it should auto hide himself when you switch to another window.

Note: the same commands are available, always, in the top right corner of the window.

Left

Docks Breezer on the left.

Right

Docks Breezer on the right.

Undock

Restores the previous window status and position, undocking from the sides.

Auto hide

If checked, when Breezer lost focus, the side bar will disappear taking only a tiny space, move your mouse cursor on the screen edge and the sidebar will appear.

Quit Breezer

Closes the software.

Tools

Here you can find some generic tools that may come handy in some situations.

Open calculator

This command will open the standard Windows calculator, useful when you deal with time spans, tempo, or file sizes.

Options

Opens the options window.

About

Show information about your copy of the software.

Folders panel context menu

In the folders panel you can find some specialized commands in the context menu. Below we will detail each one.

Pin folder to favourites

This command allows you to add the selected folder to the favourites list, so you can quickly locate it.

Note: Each item in the favourites list (numbered from 1 to 9) are accessible via the ALT+Position number shortcut. Breezer will automatically move to the requested item in the list.

Pin network folder or drive

This command will open a dialog where you can:

1. Insert in the text box a network address, like \\myserver\share_name and have it mapped in the favourites list for easy access.
2. Breezer will show you all your local disks so you can choose an entire drive or a specific folder to be added to the list.

Note: Both for the pinned folders and the hidden folders you can always manage them in the Options (link locate in the top-left corner) then Browsing and previewing tab, section "Hidden and pinned folders". Here you can reorder, delete, or edit each entry (one per line).

Open file explorer here

Will open a Windows explorer window in the exact location you selected.

Ban path (make invisible)

If you choose to use this command the selected folder will be hidden from the view. Useful if you want to focus only on the folders that really matter to you. As an example, for a project, you can ignore folders that contains assets that you do not care about in your specific workflow.

Note: Both for the pinned folders and the hidden folders you can always manage them in the Options (link locate in the top-left corner) then Browsing and preview tab, section "Hidden and pinned folders". Here you can reorder, delete, or edit each entry (one per line).

Explorer context menu

When clicked it will present you the standard windows context menu. So, if you have any third party tool integrated in Windows, well you can easily access it.

Copy

Copies the folder in Windows clipboard.

Copy path

Copies only the folder path (as text) to the Windows clipboard.

Paste

Paste a folder or file in the selected folder.

Rename

Allow you to rename the folder.

Warning: a known bug is present in this command, please be careful when using it.

File view and search results context menu

This menu is available in the search results, or folder content view panel. It contains the subfolders (if any) of the current selected folder in the folder view, plus any supported media file. We will skip here any explanation about the obvious copy, paste, delete etc. commands, and jump directly to the file-specific commands. At the beginning of this document, you'll find a section just for that menu.

Refresh view

If you are unsure if the search result or what you see is exactly what you expect, maybe after a well-deserved coffee break, you can use this command to force the software to reload or the search result or the folder content.

Remove all tags

As the name implies, upon confirmation, the software will remove any tag from the selected files.

Note: This command works on any selected file so be careful when using it.

Remove tag from selection

If you select multiple files Breezer will automatically show you a sub menu with every tag that is currently applied to the selection. If you click on a tag that tag will be removed from the selection, leaving any other tag in its place.

Rating

Via this menu you can rate you samples. You can then sort the column (as any other column, in any grid, inside Breezer) and see on to the sample you like most, or if you want to clean up your library you can spot the samples you really don't like.

Advanced

This menu contains some utility command that can come handy in some situation.

Locate in folder tree

When executed wherever you are (since remember, click a folder in the file view and Breezer will take you there) Breezer will locate and expand the folder tree so the two panels will be in sync.

Pin network folder or drive

This command will open a dialog where you can:

1. Insert in the text box a network address, like `\\myserver\share_name` and have it mapped in the favourites list for easy access.
2. Breezer will show you all your local disks so you can choose an entire drive or a specific folder to be added to the list.

Note: Both for the pinned folders and the hidden folders you can always manage them in the Options (link locate in the top-left corner) then Browsing and previewing tab, section "Hidden and pinned folders". Here you can reorder, delete, or edit each entry (one per line).

Open file explorer here

Will open a Windows explorer window in the exact location you selected.

Toggle file metadata panel

[deprecated]

Export list to csv (Excel)

Exports the file list in a format (CSV, coma separated value) that can be then shared with others. Excel supports natively this data format, but many other tools can understand the CSV format.

Tag library context menu

The last panel available in Breezer is the tag library that shows the hierarchical structure of the your tag library and allow you to navigate your library easily.

Note: To organize your library and move your tags you can always use drag'n'drop. So you can move around your tags easily. Note that in the status bar you will always have a preview of what Breezer will do via a text message. E.g. when you drag a tag in the status bar you will see a message similar to "Move tag X into Y".

Note: Remember that you can always combine a text search and a tag search, simply input your search text and the choose/add/remove tags to the filter. Breezer will start a new search each time you alter the tag filters.

Note: Whenever a tag search is active you can check the current filter under the "Tag search" tab panel in the bottom of the window.

New

Opens a new dialog windows where you can create one or more tags.

Note: By default, the new tag will be placed under the selected tag. In the tag creation window, you can always decide to promote it as a root tag by selecting the "Root" radio button.

Tag selection wit 'X'

Tags the current selection (in the file view) with the selected tag.

Tag view with 'X'

Tags the entire file view (regardless of the current selection).

Filter

The filter submenu allows you to alter the current tag search. If you click a tag, a tag search will start with exactly the tag you choose, so you will see (depending on your tag search options) only the media files that are tagged with the selected tag. But Breezer support more complex searches with nearly an unlimited number of tags, and this menu allow you to choose which tags to use.

Exactly by tag

Instructs Breezer to show you only files tagged exactly with the selected tag, or better it will show you any file in the folder (or folders if you choose to do a system wide tag search) which contains at least the selected tag.

Add tag to filter

Adds the selected filter to the search, so you can refine your search via multiple tags.

Remove tag from filter

Removes the selected tag from filter. Any other tag will stay in the search criteria.

Delete 'X'

Delete the selected tag but Breezer will keep any child tag untouched.

Note: Any child tag will be moved in the same hierarchy level of the deleted tag, so one level up.

Delete (including child tags)

Delete the selected tag and all its children.

Move tag up by one level

Moves the tag up of one level in the hierarchy.

Refresh

Force Breezer to re-read the entire tag structure.

Copy tagged files to folder

Copies any file tagged with the selected tag into another folder. Breezer will show a standard Windows dialog where you can choose the path where you want to copy the files, then Breezer will pick each file and copies to the selected folder.

Note: This command is very useful when you have to move a bunch of files which are part of a specific project (so you can tag any file involved in a particular project or customer).

Move tagged files to folder

Move any file tagged with the selected tag into another folder. Breezer will show a standard Windows dialog where you can choose the path where you want to copy the files, then Breezer will pick each file and move it to the selected folder.

Note: This action cannot be undone, so be careful when you use this command.

Edit 'X' properties

Opens the properties window for the selected tag. There you can change various tag properties.